



Estuary Cleanup

Successful Strategies and Key Opportunities for Reducing Trash in the Bay

State of the Estuary Conference

May 29, 2024

Trash Sources, Pathways, Threats, and Solutions for the San Francisco Bay

Chris Sommers

EOA, Inc.

Program Manager

*Santa Clara Valley Urban Runoff
Pollution Prevention Program*



Sources and Pathways of Trash to Water Bodies

Sources

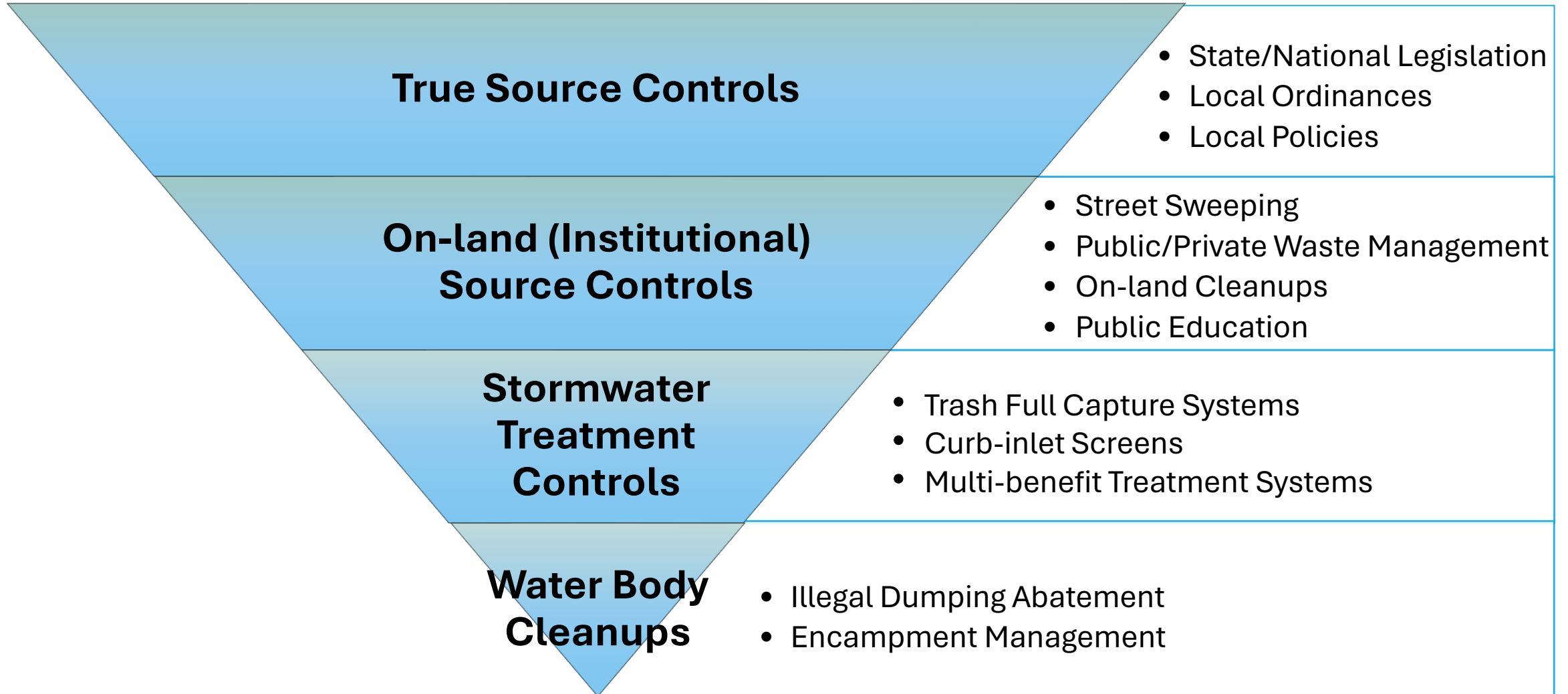
- Containers
- Cars/Trucks
- Pedestrians
- Illegal Dumping & Encampments

Pathways

- Storm Drains
- Wind
- Direct Dumping into Water Bodies



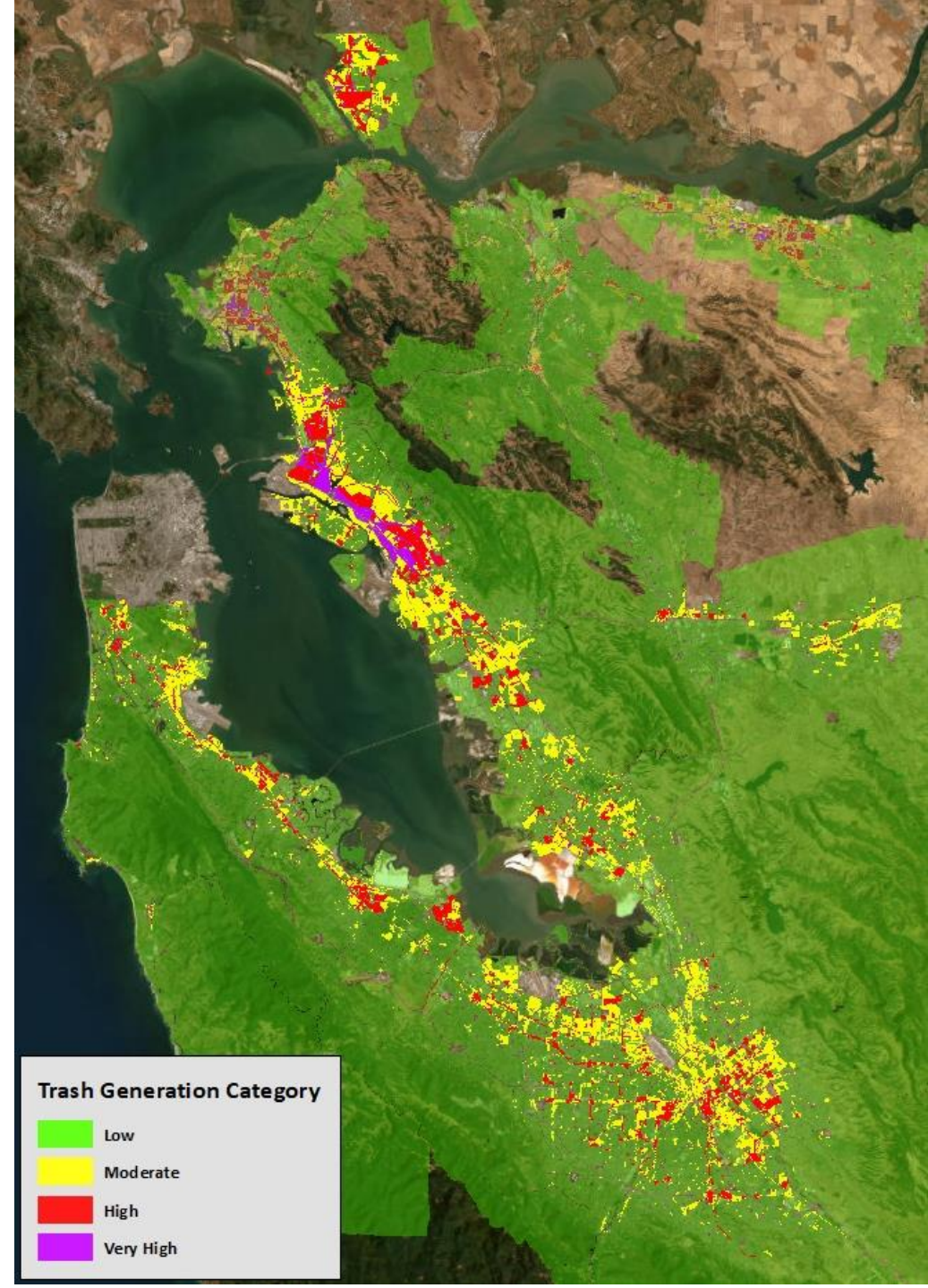
Actions to Address Trash Sources and Pathways



Progress Made on Reducing Trash in Stormwater

5 Largest Bay Area Counties

Category	Acres	% of Baseline Trash Load
Total Area	945,486	--



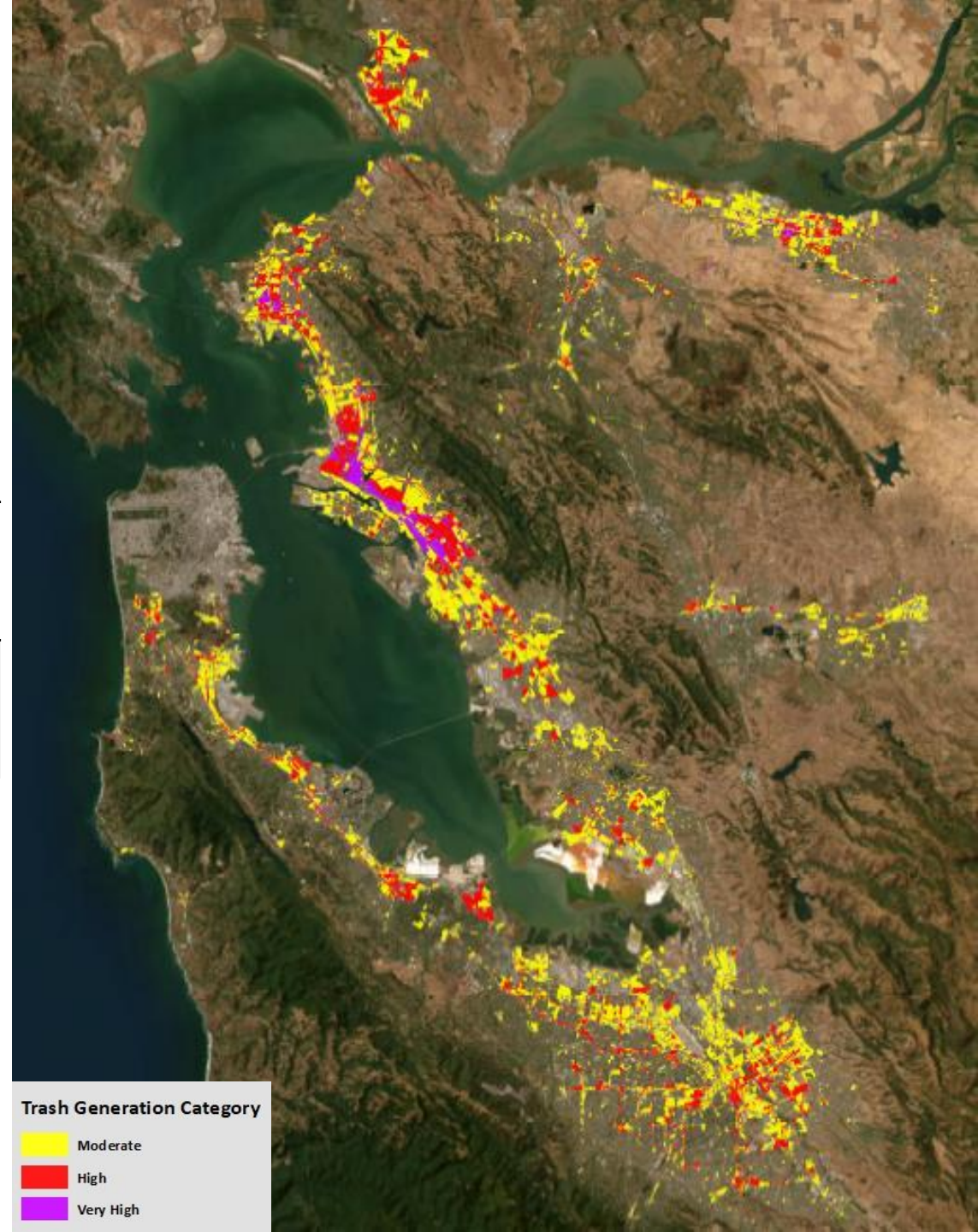
Data Compiled from City/County 2022-23 Annual Reports

Progress Made on Reducing Trash in Stormwater

5 Largest Bay Area Counties

Category	Acres	% of Baseline Trash Load
Total Area	945,486	--
Trash Generating Area (2009 Baseline)	102,445	--

Data Compiled from City/County 2022-23 Annual Reports



Trash Generation Category

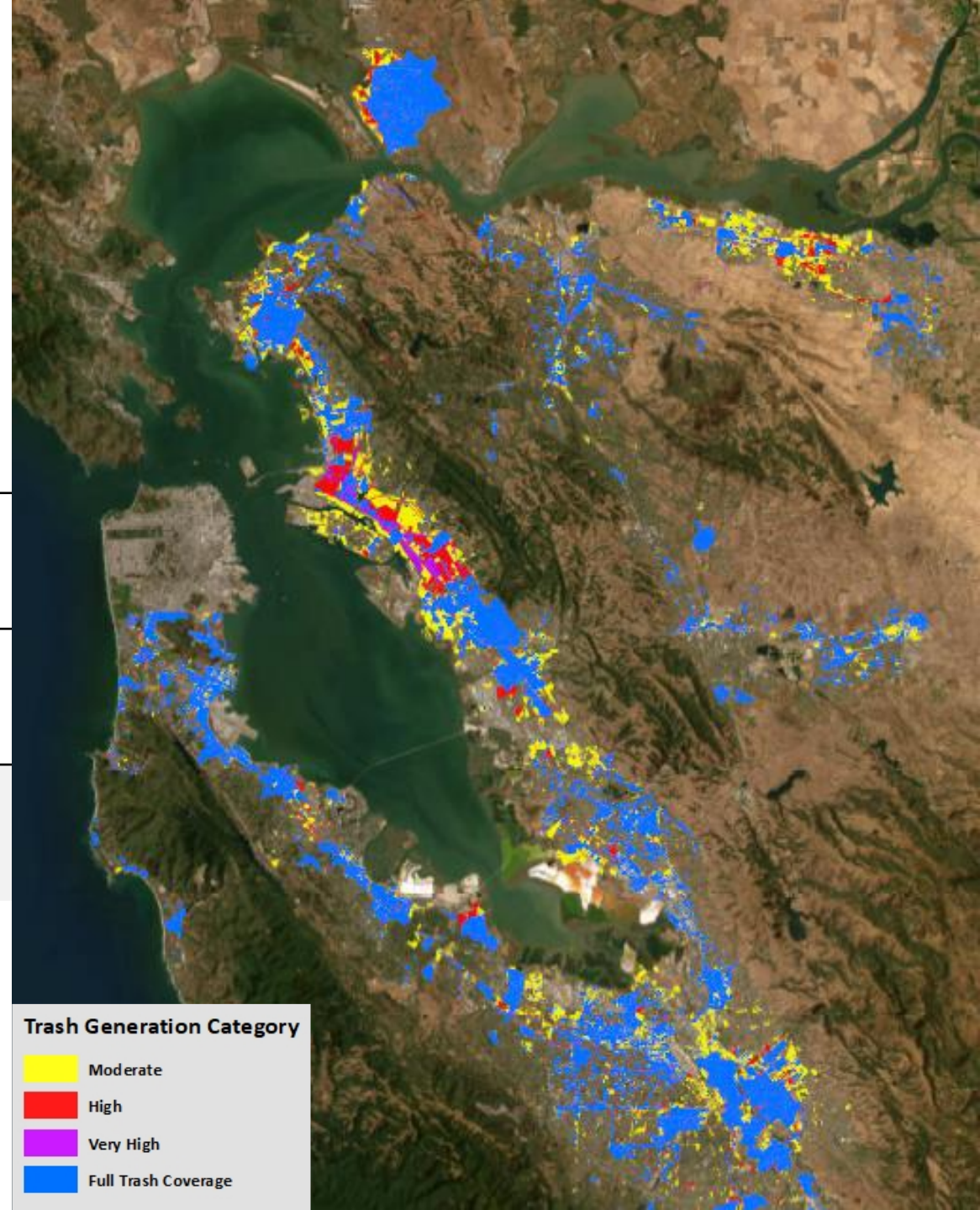
- Moderate
- High
- Very High

Progress Made on Reducing Trash in Stormwater

5 Largest Bay Area Counties

Category	Acres	% of Baseline Trash Load
Total Area	945,486	--
Trash Generating Area (2009 Baseline)	102,445	--
Full Trash Capture Treatment	45,384	44.2%

Data Compiled from City/County 2022-23 Annual Reports



Trash Generation Category

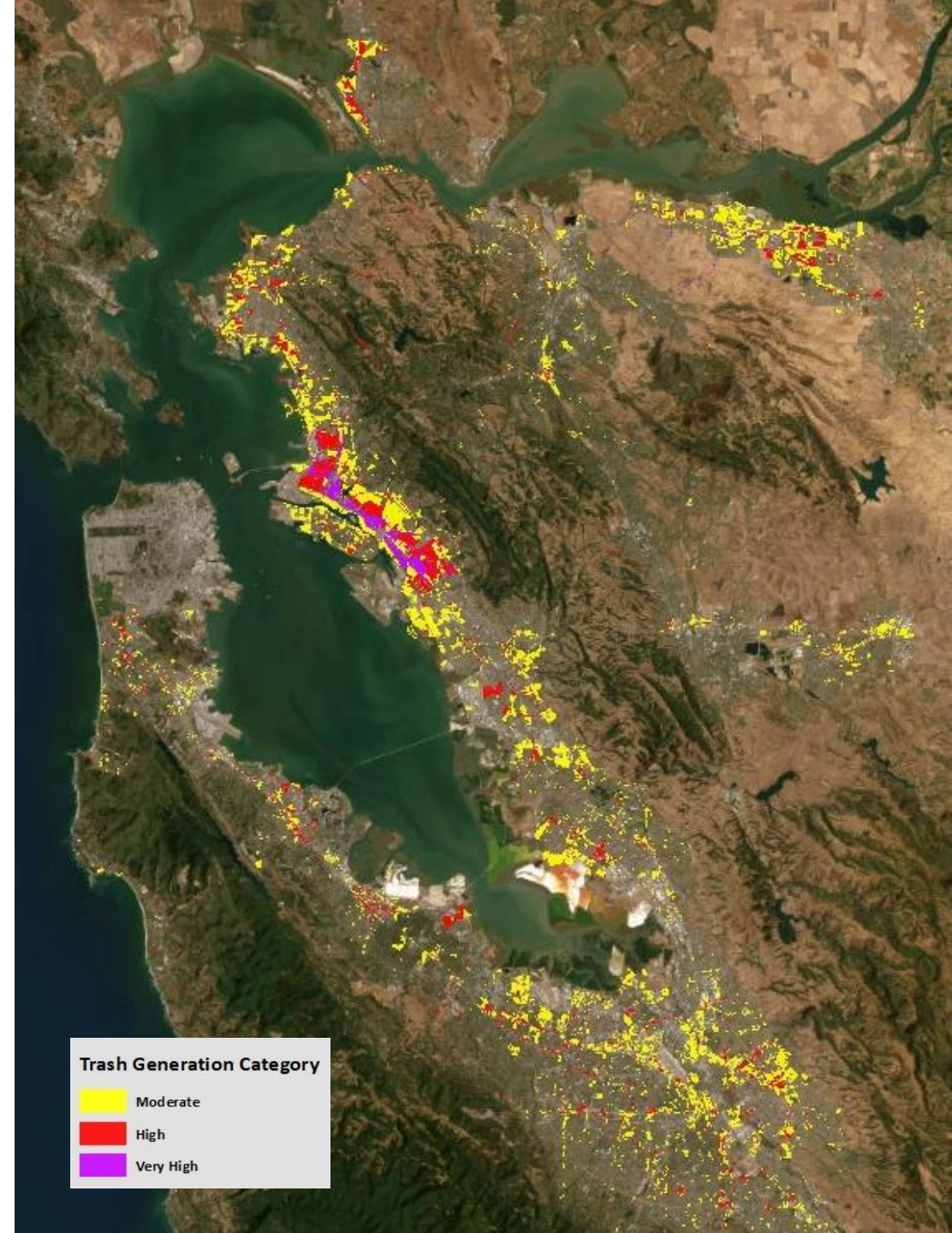
- Moderate
- High
- Very High
- Full Trash Coverage

Progress Made on Reducing Trash in Stormwater

5 Largest Bay Area Counties

Category	Acres	% of Baseline Trash Load
Total Area	945,486	--
Trash Generating Area (2009 Baseline)	102,445	--
Full Trash Capture Treatment	45,384	44.2%
Other Trash Controls	13,118	26.4%

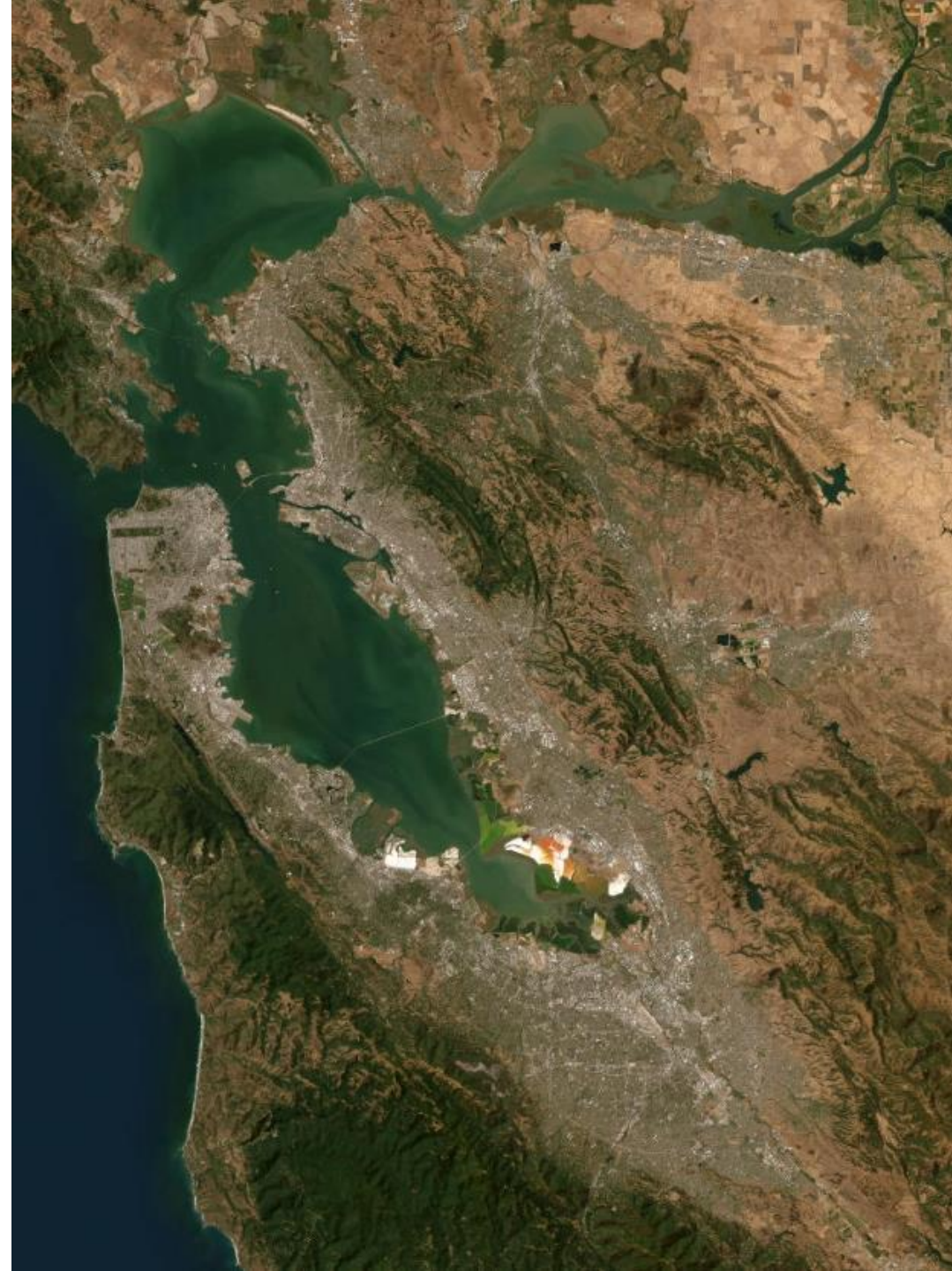
Data Compiled from City/County 2022-23 Annual Reports



Progress Made on Reducing Trash in Stormwater *5 Largest Bay Area Counties*

Category	Acres	% of Baseline Trash Load
Total Area	945,486	--
Trash Generating Area (2009 Baseline)	102,445	--
Full Trash Capture Treatment	45,384	44.2%
Other Trash Controls	13,118	26.4%
Total	58,502	70.6%

Data Compiled from City/County 2022-23 Annual Reports



SF Bay Area Trash Monitoring

- **Deposited Trash in Creeks/Shorelines (2017-2020)**
 - Extent and magnitude of trash; dominant trash pathways
 - 225 sites, 825 sampling events
- **Stormwater Discharges (2023-2027)**
 - Validation of reductions via stormwater control measures
 - End-of-Pipe Netting Devices
 - 11 sites, 3 events per year
- **Trash Flowing in Creeks during Storm Events (2024 – 2027)**
 - Trash loading to SF Bay
 - 6 sites, 3 events per year





STATE OF THE SAN FRANCISCO ESTUARY

2024 CONFERENCE • May 28 – 29, 2024

SFESTUARY.ORG/SOE/

Session Agenda

- **City of San Jose**
 - **Rajani Nair** - Deputy Director, Environmental Services Department, Watershed Protection Division
- **City of Oakland**
 - **Kristin Hathaway** - Director, Bureau of Environment, Public Works Department
- **Downtown Streets Team**
 - **Chris Richardson** - Director of Programs
- **Panel Discussion/Q&A**