

Beyond Plants, How Nurseries can give meaning to our lives

Leia Giambastiani, Senior Project Manager

Alycia Matz, Project Manager



STRAW

Students and Teachers

Restoring A Watershed



Point Blue
Conservation
Science



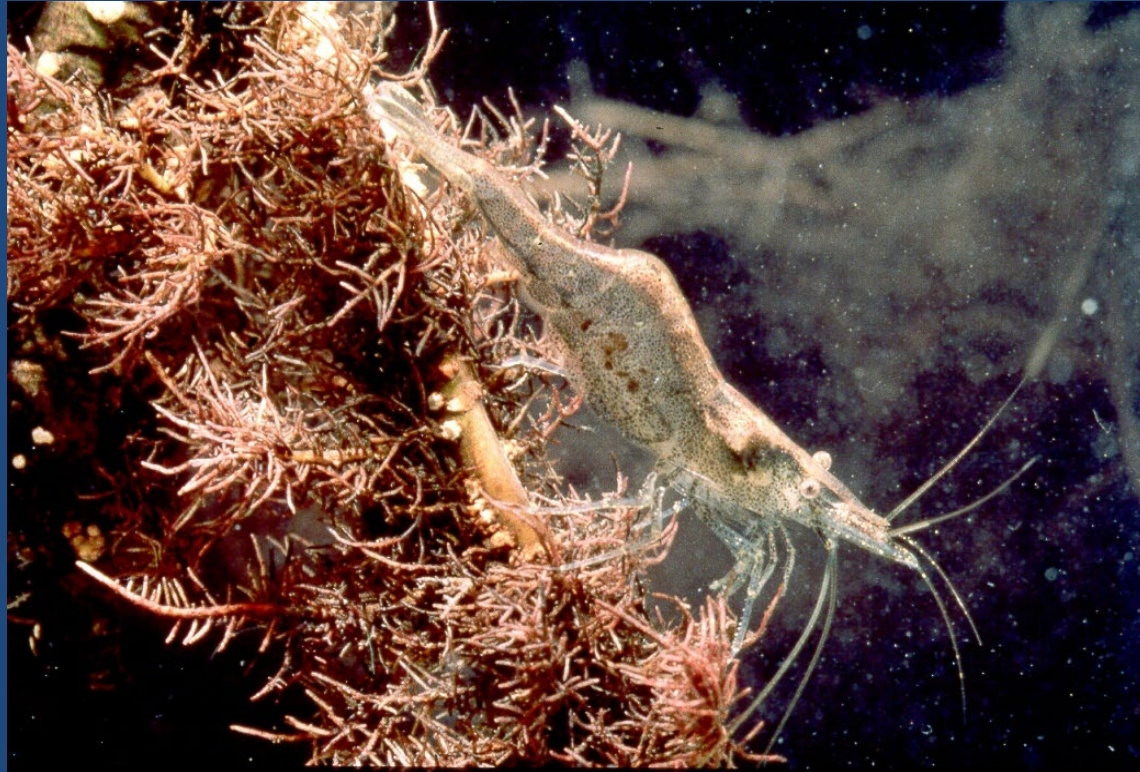
Overview

Point Blue's nurseries provide opportunities for engagement through:

- Early career training
- Weekly volunteer opportunities
- Group engagement: community organizations, classes, corporations
- Hands-on learning
- Tours



Restoration—Saving the California Freshwater Shrimp

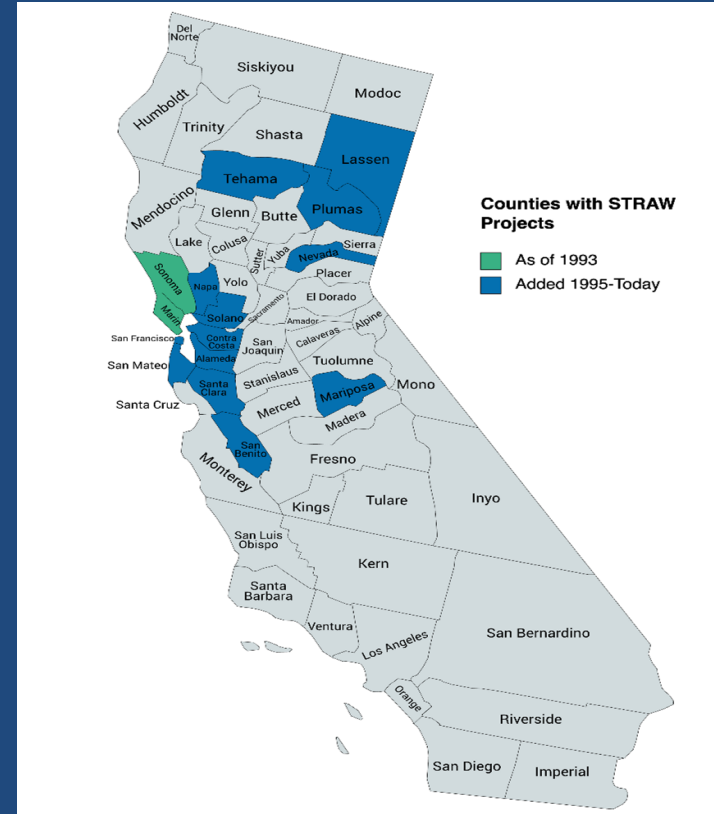


Restoration—30 Years of Restorations Completed

The Big Picture

Since 1992:

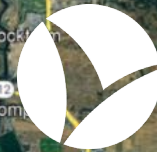
- Over 800 Restorations
- Over 60,000 Native Plants
- Over 50,000 Students
- Over 42 Miles of Creekbank
- In 15 counties: North Bay, South Bay, East Bay and Sierras



Services

- Community Engagement
- Revegetation
- Biotechnical Erosion Control
- Invasive Plant Removal
- “One-Stop Project Management”
- Native Plant Nursery Management





Point Blue
Conservation
Science



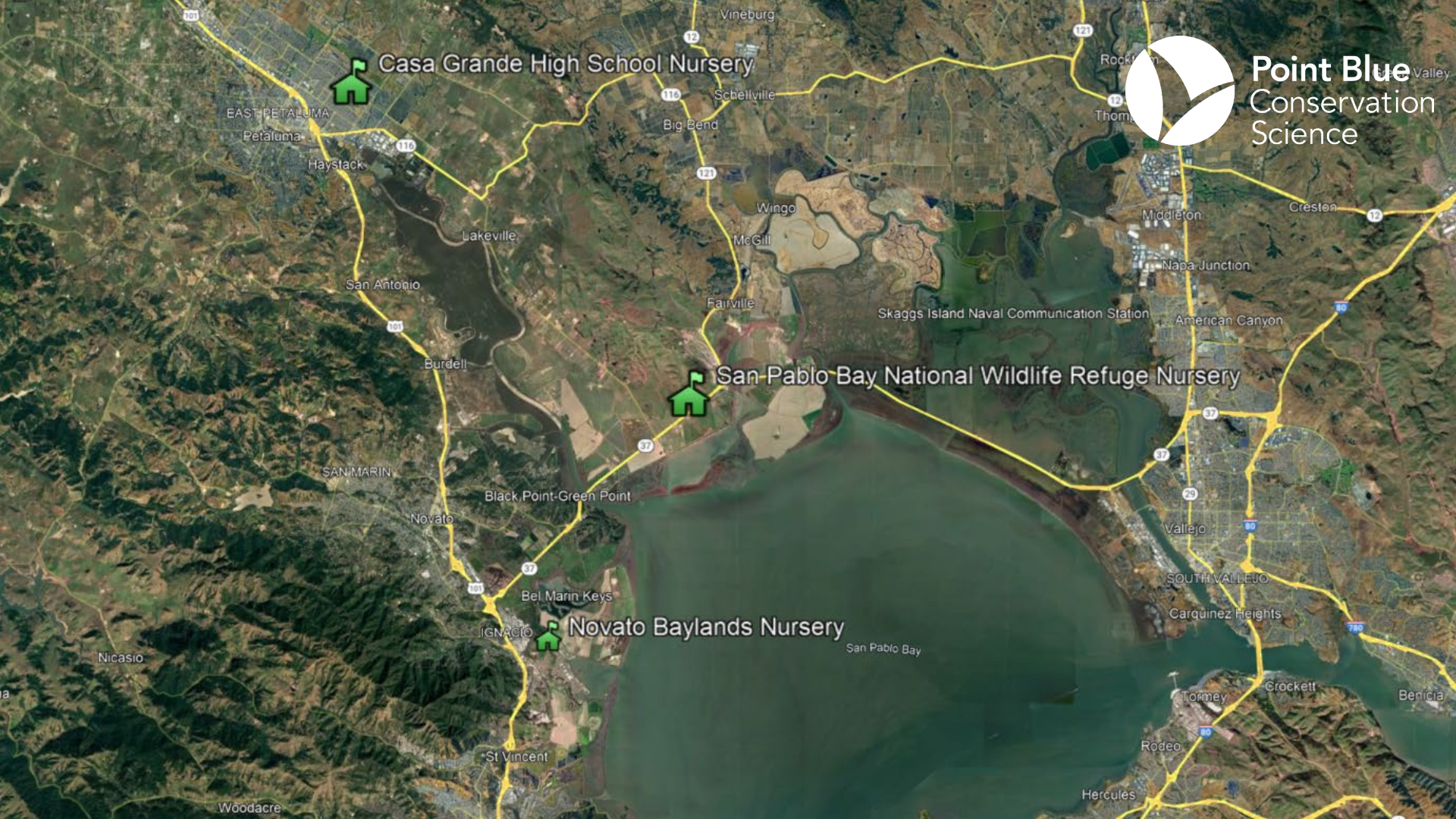
Casa Grande High School Nursery



San Pablo Bay National Wildlife Refuge Nursery



Novato Baylands Nursery



Casa Grande High School Nursery

- Located on the high school campus and park next to a neighborhood
- Collaborate with teachers for lessons
- Hands-on learning opportunities



Novato Baylands Nursery

- Located at Hamilton Wetlands behind a neighborhood
- Weekly nursery volunteer day
- Classes and community groups, tours, and hands-on engagement



San Pablo Bay National Wildlife Refuge Nursery

- Located at the headquarters of SPBNWR, rural
- Built with help of volunteers to support growing needs of San Pablo Bay National Wildlife Refuge



Funded by a grant from California Coastal Conservancy

“Community and Climate
Connections at the Novato Baylands”



Volunteer Programming

- Multiple events each week
- Activities for all experience levels and abilities
- Freedom to pursue interests



Early Career Training

- Relevant workforce training in fields such as restoration, conservation, and horticulture
- Several paid opportunities including:
 - Conservation Corps North Bay
 - Community College Conservation Internship
 - STRAW Apprentices







Classes

- Hands-on learning opportunities
- Gain insights into what a scientific career looks like



- Continuing education opportunities for teachers and other professionals, such as STRAW's annual "Watershed Week"



A Key Venue for Public Engagement

- Increased access and engagement opportunities for community members outside of our traditional schedules:
 - Shorter and more variable time commitments
 - Easier access to site for all abilities
 - Option for activities to be indoors or sheltered



Nurturing Connections

- Develop a sense of community while making a positive impact
 - Opportunity to socialize
 - Self-empowerment in the face of climate change



- Deepen one's relationship with the environment:
 - Sense of belonging
 - Physical connection with the Earth
 - Reward of seeing progress



Thank you!

