

RESILIENTSR37

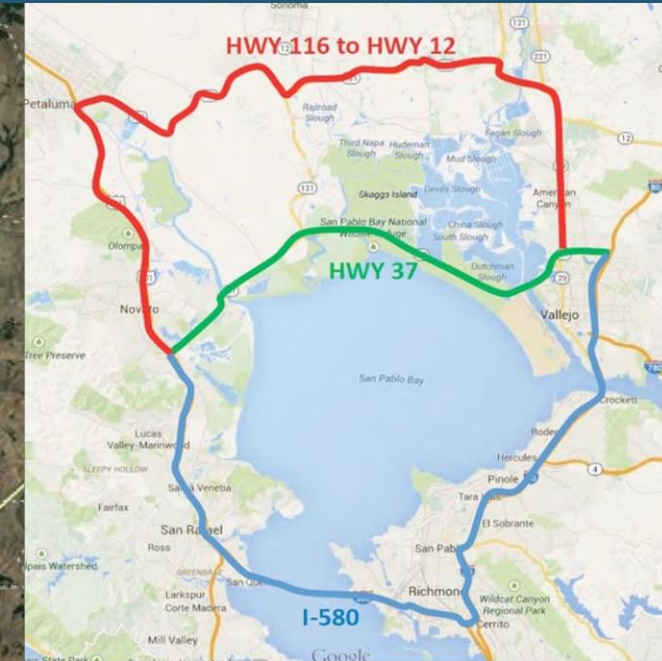


A Collaborative & Integrated Approach to Habitat Restoration and Transportation Planning

State of the Estuary Conference · May 28, 2024

ONE CORRIDOR, ONE TEAM, MANY SOLUTIONS.

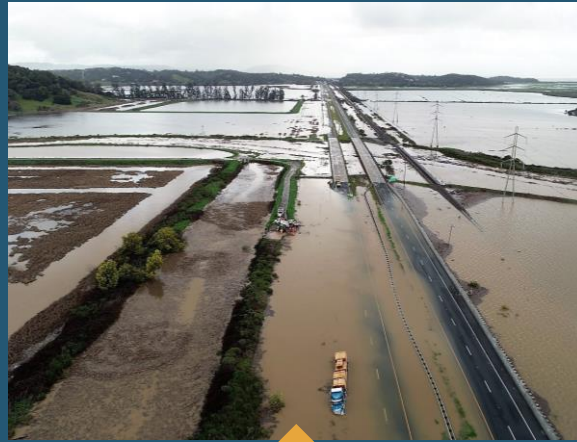
SR 37 Corridor – A Critical Regional Connector



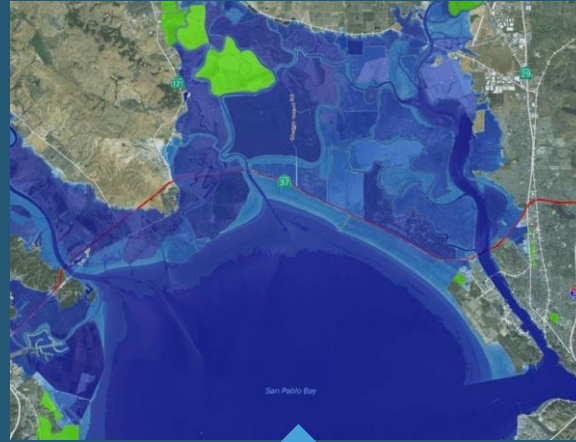
Corridor challenges



Congestion



Flooding



Sea Level Rise



Ecology

A corridor program that provides community benefits



**Sea Level Rise
Adaptation**



**Multimodal
Transportation**



Equity



Ecology



Public Access

Planning and Environmental Linkage (PEL) study

PEL PROCESS

- Early environmental considerations
- Informs studies and engineering
- Accelerates & improves the project

Need Identified



PID
Project
Initiation

PA&ED
Preliminary Design &
Environmental Studies

PS&E
Final Design
& Permits

Construction

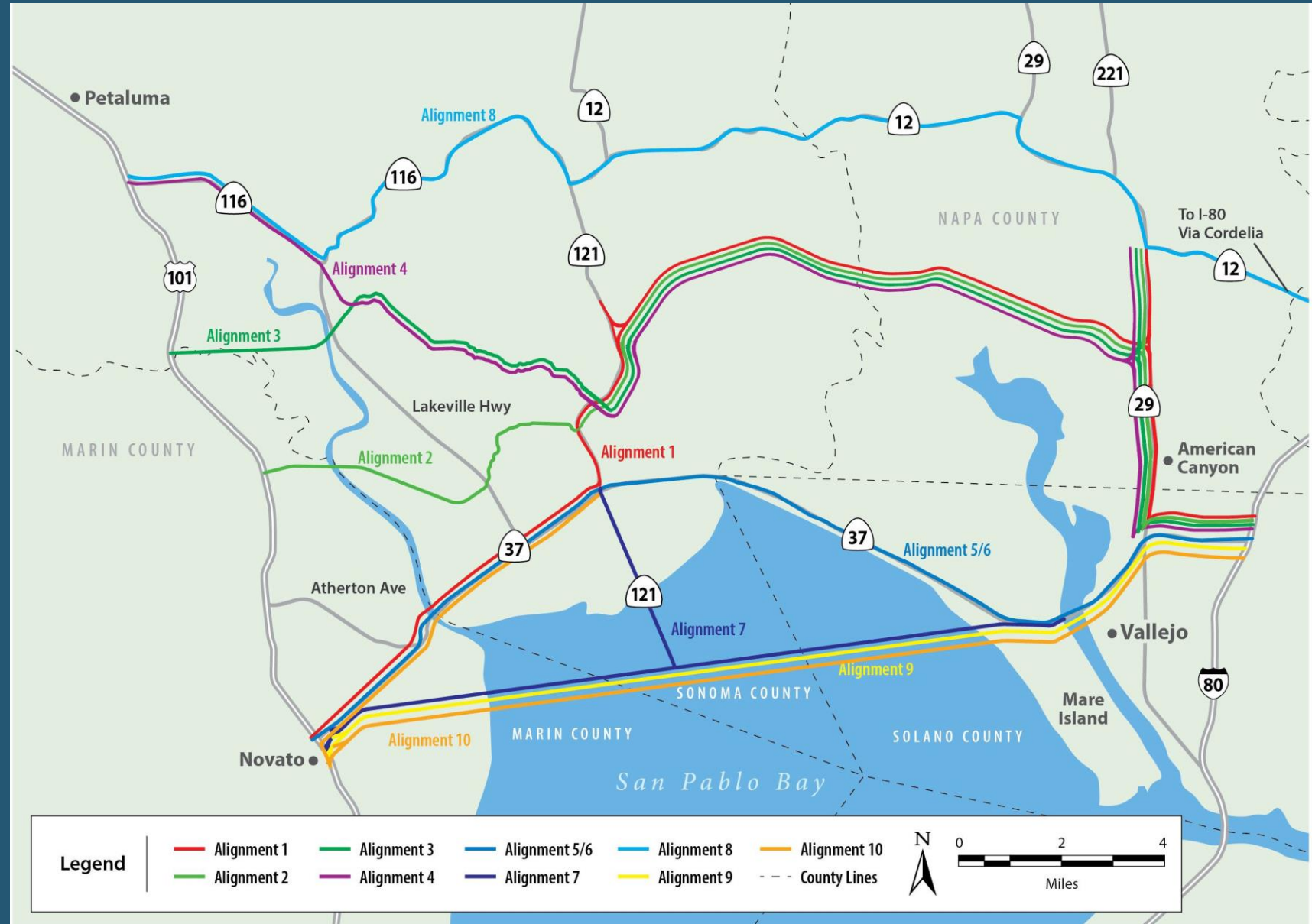
RIGHT OF WAY

Project
Completed



Planning and Environmental Linkages Study

- Long-term SLR adaptation
- Analyzed 10 different corridor alignment alternatives



SR 37 PEL Team & Stakeholder Engagement

- Broad stakeholder engagement
- Balance corridor concerns while meeting project purpose & need



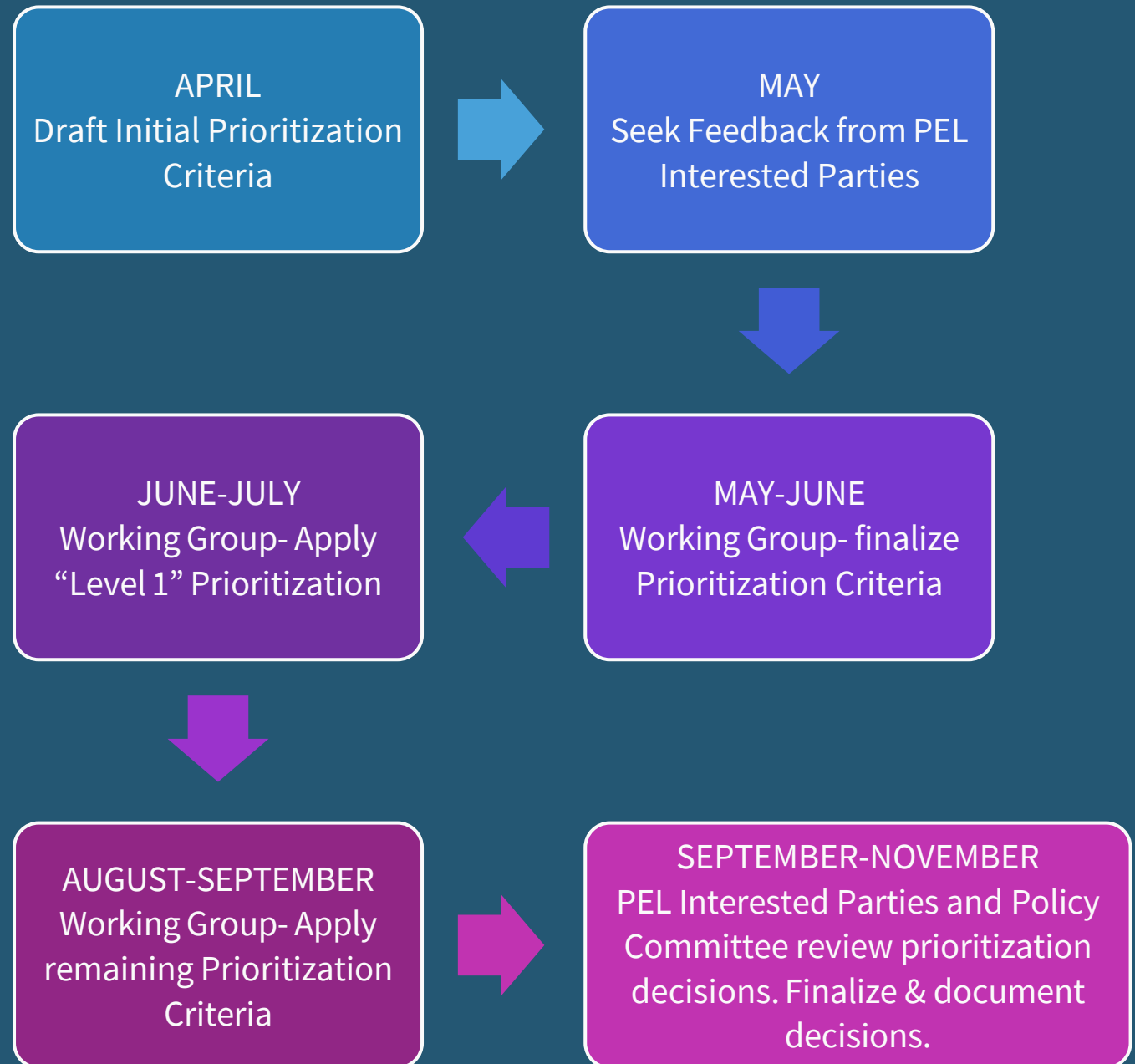
Study Conclusions



- Recommended Phasing- 8 Distinct Sections
- Estimated Section Costs- \$6 to \$11 Billion Project Total

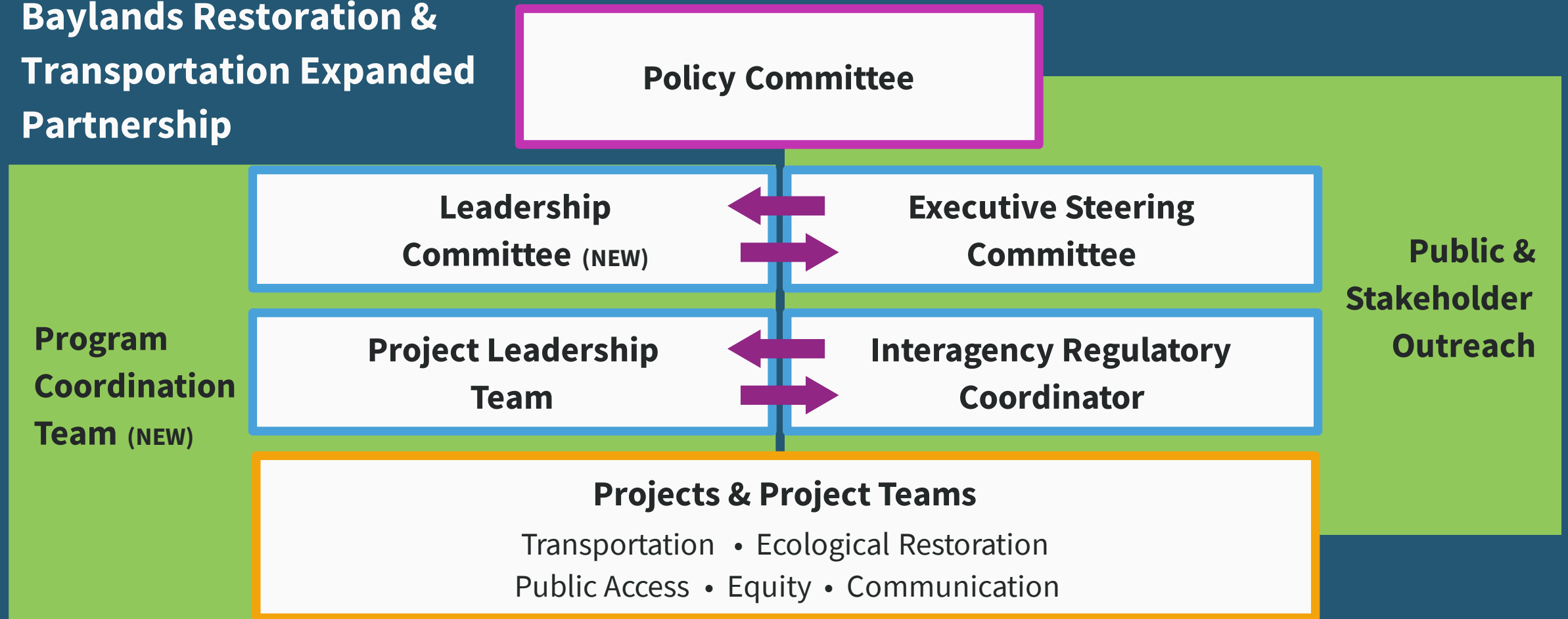
PEL Prioritization

Collaborative process to
prioritize phases



Expanded Partnership & Integrated Project Development

Baylands Restoration & Transportation Expanded Partnership



Summary

A Collaborative & Integrated Program to Enhance:

Transportation

Ecological
Restoration

Equity

Public Access

Communications