

RESILIENTSR37



The Big Picture: San Pablo Baylands Overview



State of the Estuary Conference · May 28, 2024

Road and rail run through the historical Baylands



Looking East from Sears Point to Vallejo



Photo: Justin Lewis, courtesy of Sonoma Land Trust

Looking South from Lakeville Highway to the Bay



Photo: Justin Lewis, courtesy of Sonoma Land Trust

Looking South along Novato Creek to the Bay



Photo: Justin Lewis, courtesy of Sonoma Land Trust

Developing an Ecological Landscape Vision

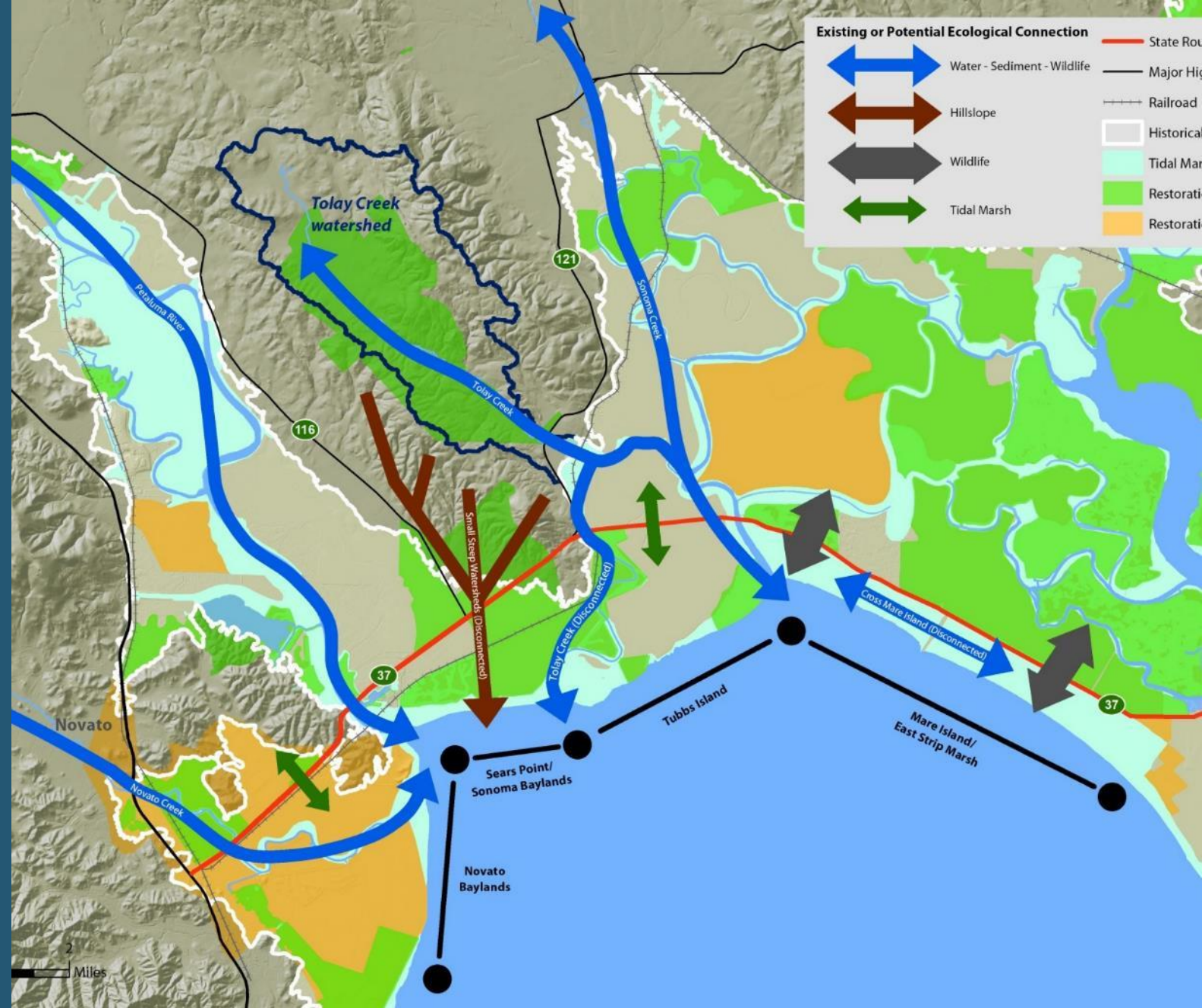
2024 - North Baylands
Regional Conservation
Investment Strategy (RCIS)

2020 - Sonoma Creek Baylands

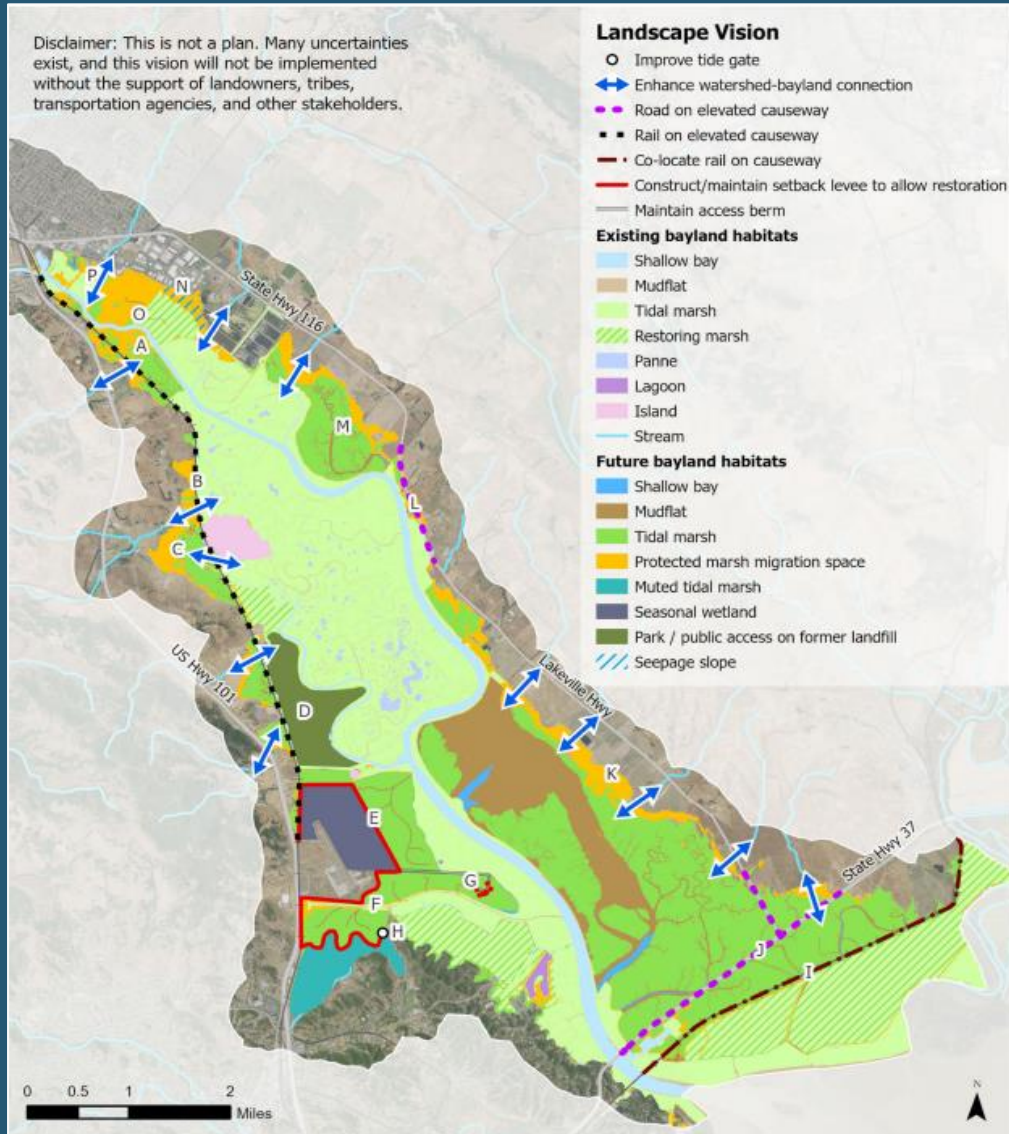
2023 - Petaluma River

Baylands 2025 - Novato Creek

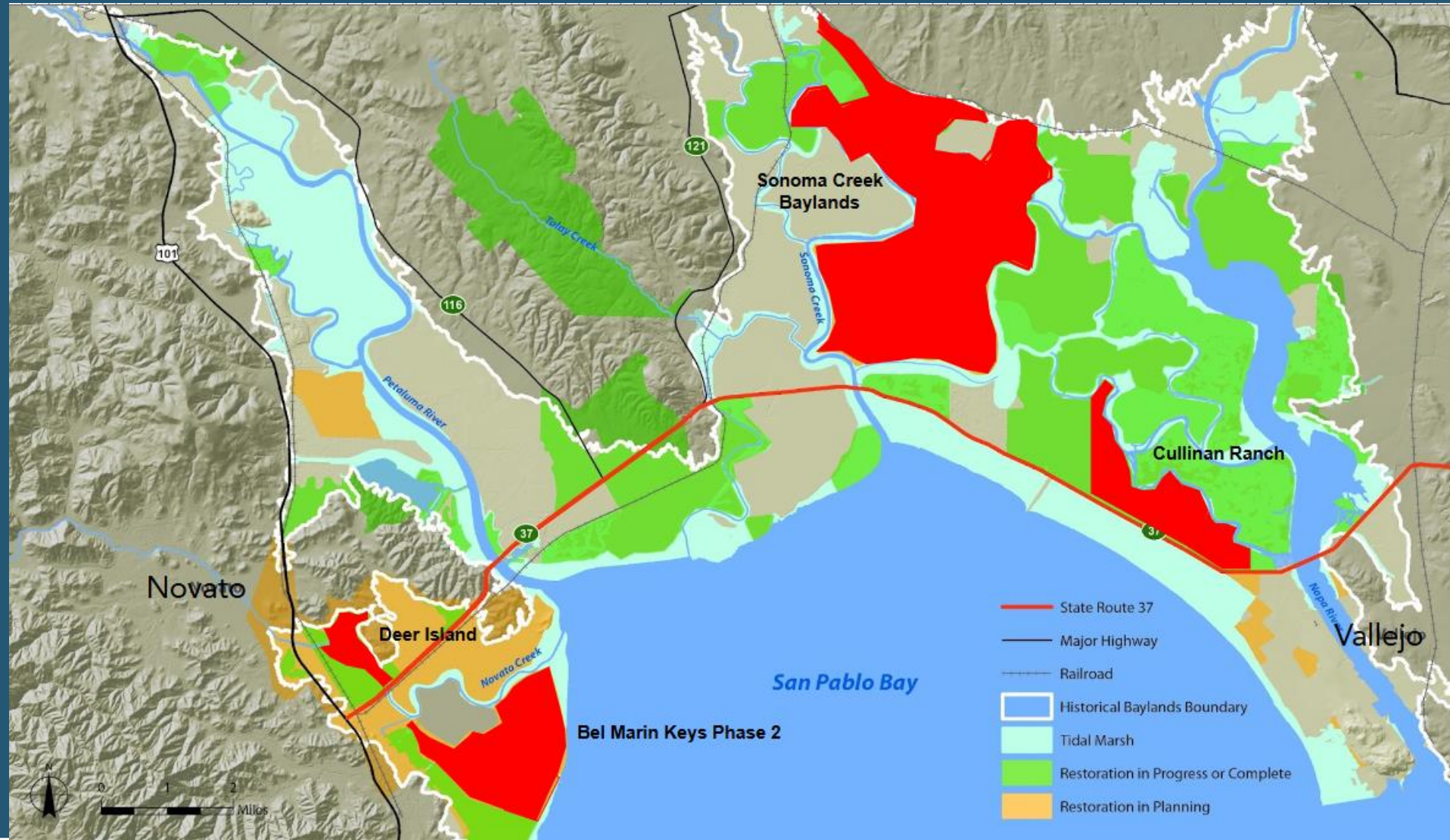
Baylands



Petaluma River and Sonoma Creek Baylands Strategies

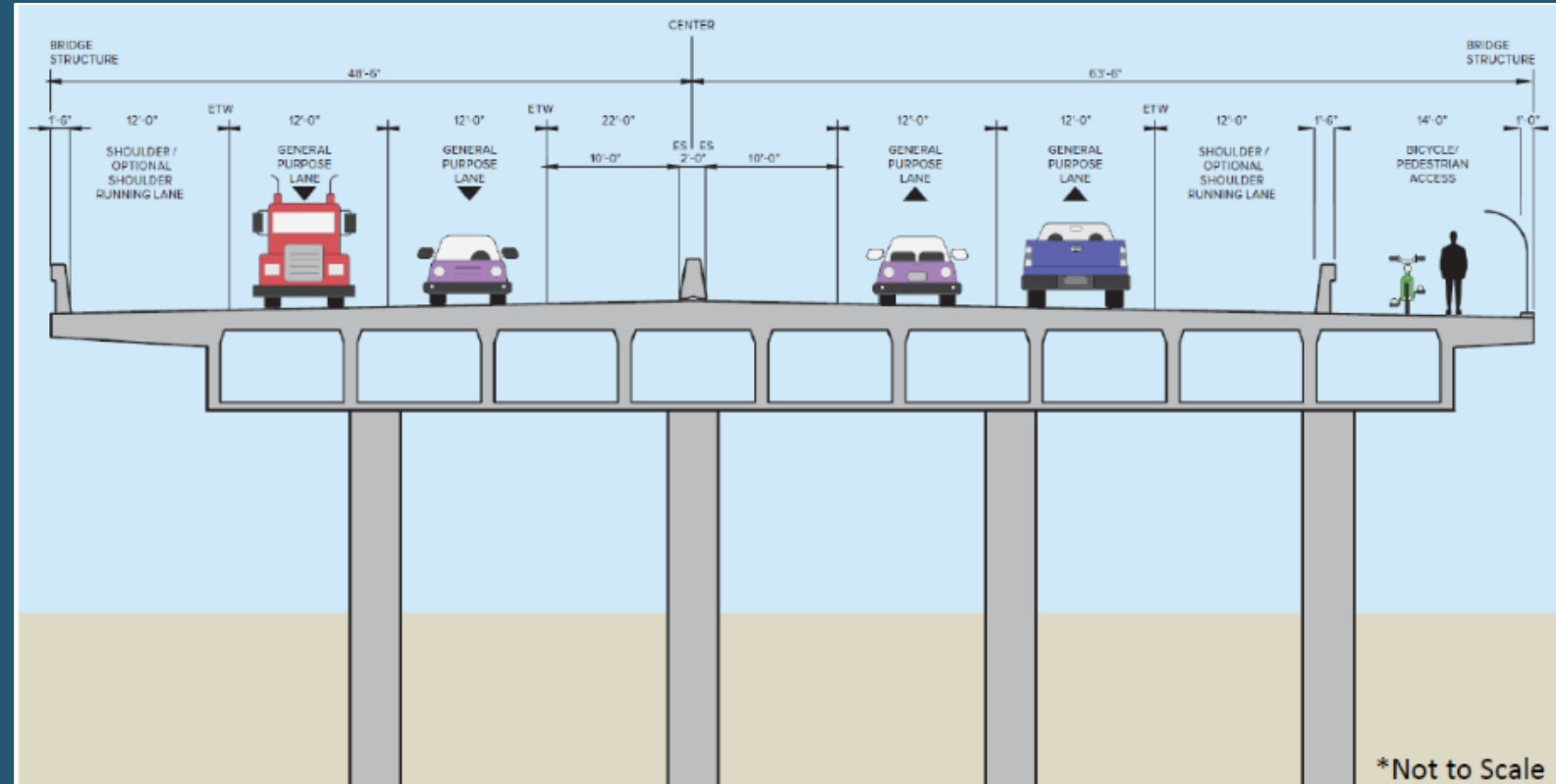


Present restoration planning

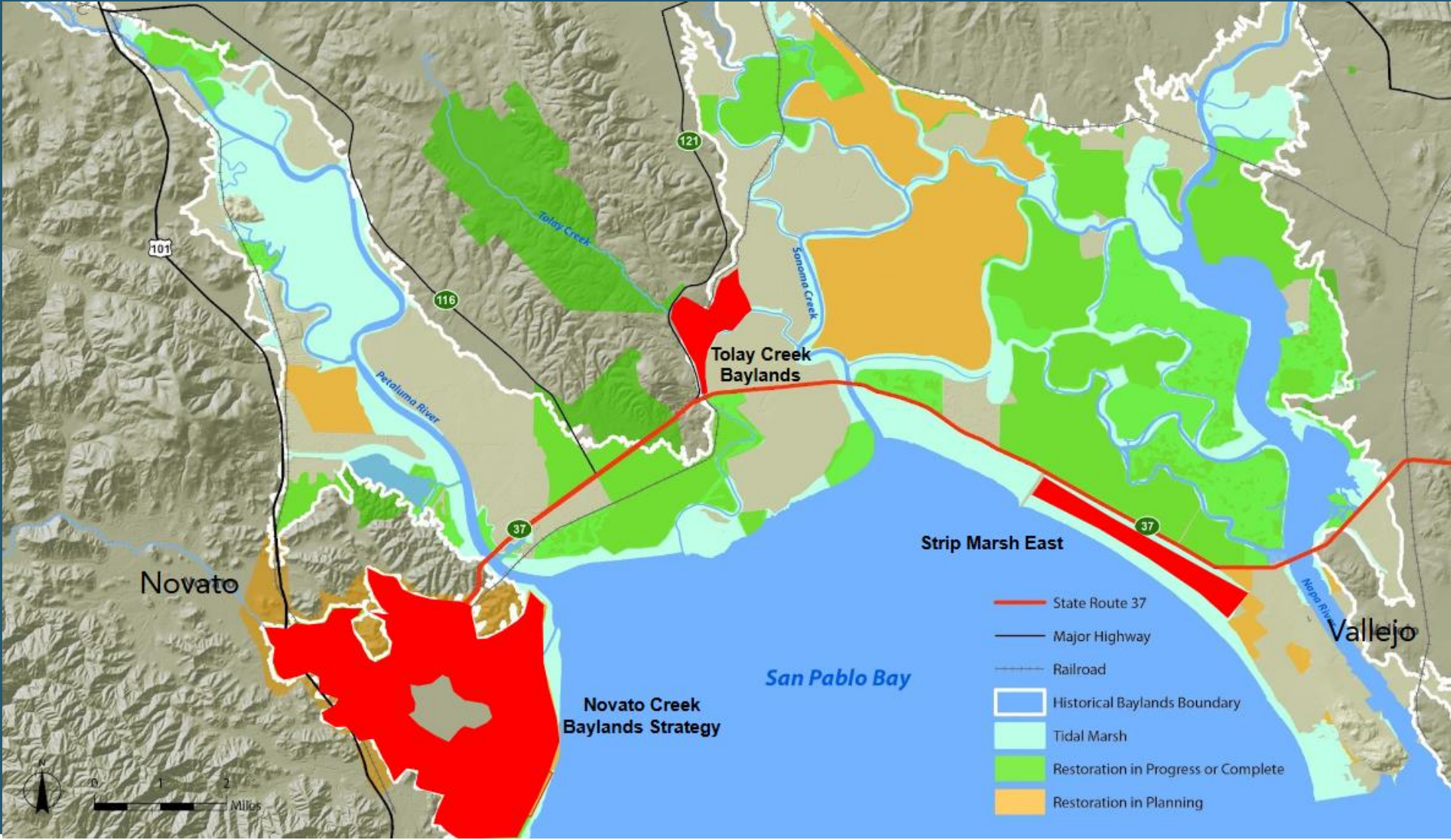


Moving to an Integrated Landscape Vision with the PEL

- Examines a broader area.
- Input from a wide array of interested parties.
- Long-term transportation vision.
- Early consideration of environmental issues.
- Identifies future projects.



New restoration planning facilitated by the PEL



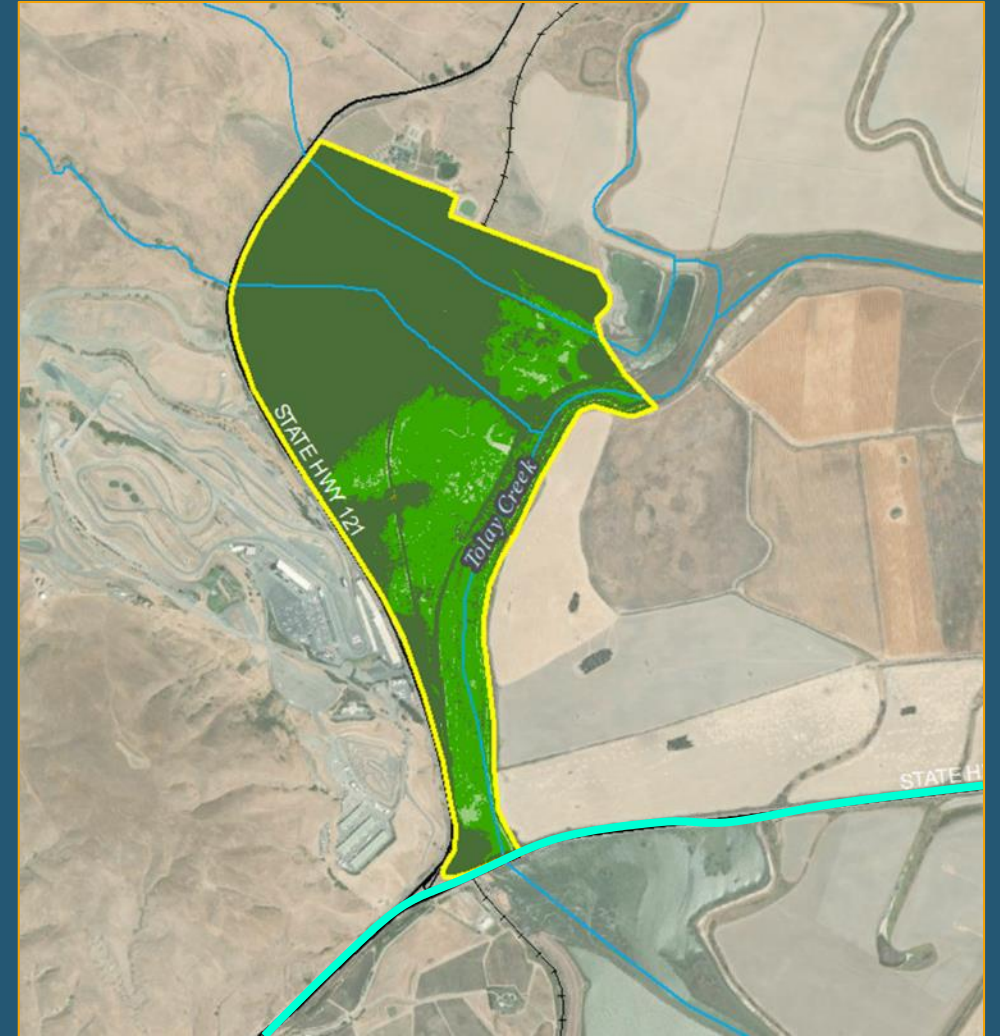
Issues at Tolay Creek Bridge

- Tolay Creek connects the Bay to the Tolay watershed.
- Poor hydraulic connection blocks tides and floods.
- Channel too narrow for the tide.
- Lengthen the bridge to allow a larger channel.



Lengthening of the bridge facilitates restoration

- Bridge needs to accommodate a deeper channel.
- Lengthening the bridge also requires removing old roadbeds.
- Tidal prism limits area restored.
- Avoid impacts downstream of the bridge.



Issues at Strip Marsh East

- High marsh with special-status species.
- Protects the road and lands to the north.
- Poor drainage leading to the conversion of 900 acres of marsh.
- New swale to improve drainage.



Improving the drainage to the Bay enhances the marsh

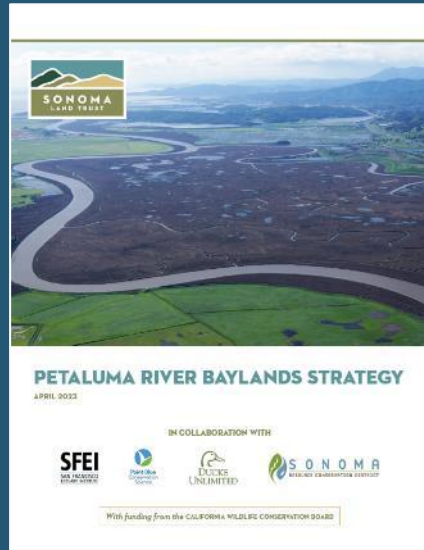
- The site is constrained.
- Restored area needs to avoid the road footprint.
- Hydrology of ponds north of the road should be maintained.
- How will the site evolve if the piled causeway is constructed?



Lessons being learned

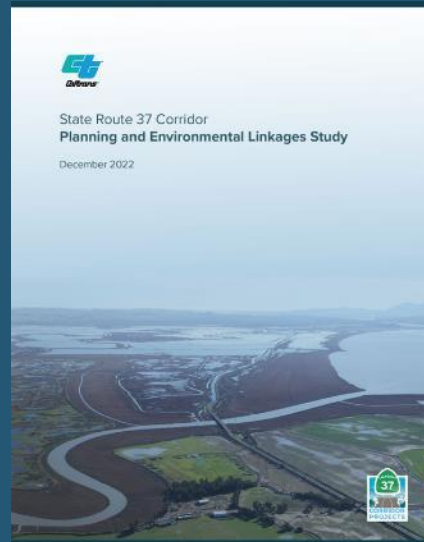
- 1. Collaborative planning** to integrate equity, restoration, and transportation efforts. Better projects and more resources.
- 2. Innovative regulatory approaches** to permitting integrated projects. Looking at benefits as well as adverse impacts.
- 3. Coordinated strategies** to plan, design, and implement projects. Balancing the needs of the interested parties.

Further reading on San Pablo Baylands:



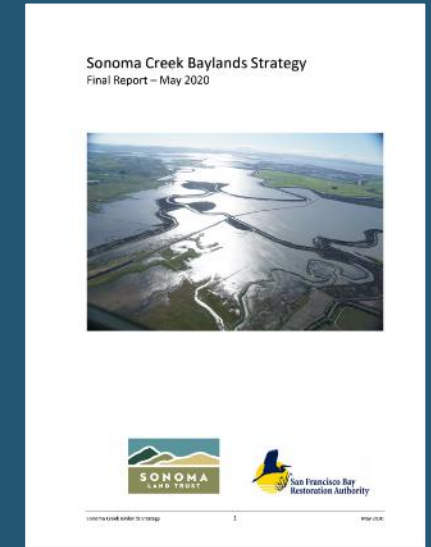
Petaluma River Baylands Strategy

[sfei.org/search/google/PetalumaRiverBaylandsStrategy - gsc.tab=0&gsc.q=PetalumaRiverBaylandsStrategy&gsc.sort=](https://sfei.org/search/google/PetalumaRiverBaylandsStrategy-gsc.tab=0&gsc.q=PetalumaRiverBaylandsStrategy&gsc.sort=)



State Route 37 Corridor PEL

<https://dot.ca.gov/caltrans-near-me/district-4/d4-projects/d4-37-corridor-projects/37-planning-environmental-linkages>



Sonoma Creek Baylands Strategy

sfei.org/projects/sonoma-creek-baylands-strategy

Jeremy Lowe
JeremyL@sfei.org
San Francisco Estuary Institute