

A satellite-style map of the San Francisco Bay Area, showing the coastline, major waterways like the San Francisco Bay and Suisun Bay, and surrounding land with various terrain colors (green for forests, brown for hills, and grey for urban areas).

# Regional Shoreline Adaptation Plan

An implementing project of **BAY ADAPT**

## Shaping the Future of Bay Area Adaptation through BCDC's Regional Shoreline Adaptation Plan (RSAP)

May 28, 2024



**MITHŪN**





# Agenda

<b>Welcome to the Session!</b>	<b>5 min</b>
<b>Creating Consistent Guidelines for Local Sea Level Rise Adaptation Plans</b>	<b>10 min</b>
<b>Equity Strategy in Practice through the Regional Shoreline Adaptation Plan Guidelines</b>	<b>10 min</b>
<b>Expert Panel Discussion on the RSAP Guidelines: Perspectives from Community, Environment, and Infrastructure</b>	<b>40 min</b>
<b>Interactive Activity</b>	<b>35 min</b>
<b>Wrap Up</b>	<b>10 min</b>

# Who is in the room?

- What **issues** do you work on?
- What **sector** are you from?
- What brought you to **this session** today?

**menti.com**

CODE

**6841 6667**

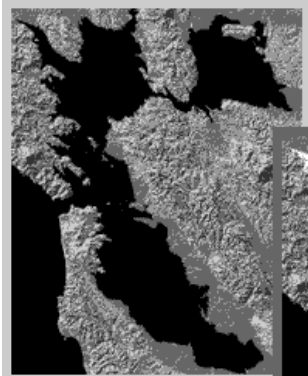


# **Creating Consistent Guidelines for Local Sea Level Rise Adaptation Plans**

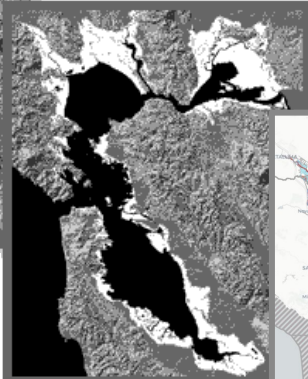
**Jaclyn Perrin-Martinez, Senior Climate Adaptation Planner**



# A look at BCDC's past and future



The Bay in 1849

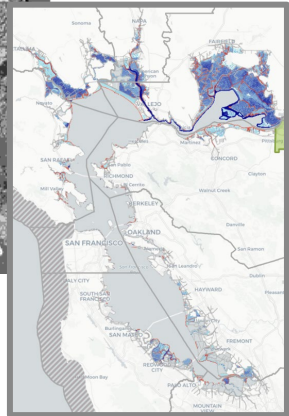


Bay fill in 1965

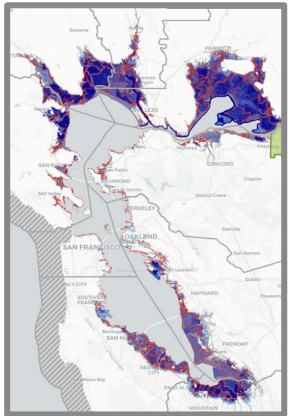


BCDC became the first coastal management agency in the nation in 1965

Sea level rise 1 foot by 2050



Sea level rise 6 feet by...



Top photo is king tides flooding at Redwood Shorelines, bottom photo is the Baylands Preserve. Photos courtesy of the California King Tides project.

No matter where you live, **shoreline flooding will impact everyone** in the Bay Area

What's at risk?  
(40-100 years)



**5 million** daily highway vehicle trips

**60,000** daily rail commuters



**13,000** existing housing units

**104,000** existing jobs

**70,000** new, planned housing units

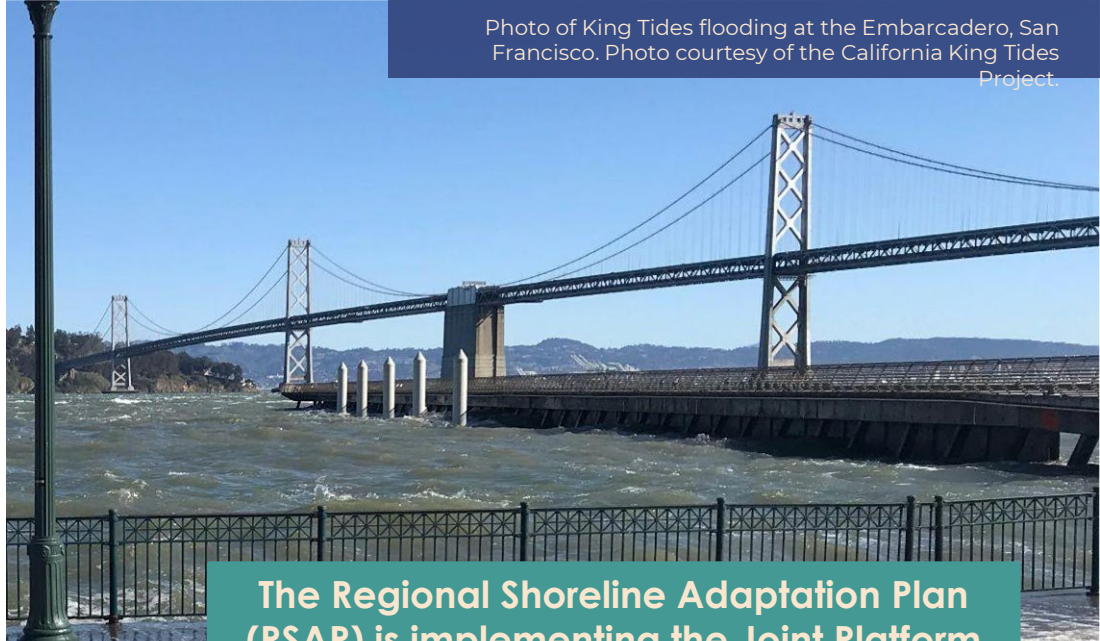
**85,000** new, planned jobs



**28,000** socially vulnerable residents



**20,000** acres of depressional wetlands, lagoon and tidal marsh habitat



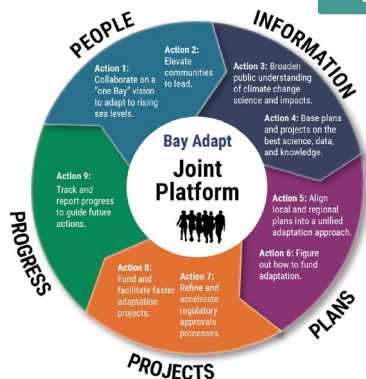
The Regional Shoreline Adaptation Plan (RSAP) is implementing the Joint Platform

# BAY ADAPT

REGIONAL STRATEGY FOR A RISING BAY

A regional, **consensus-driven strategy** that lays out the actions necessary to adapt the Bay Area to rising sea level to protect people and the natural and built environment.

An initiative of the San Francisco Bay Conservation and Development Commission.

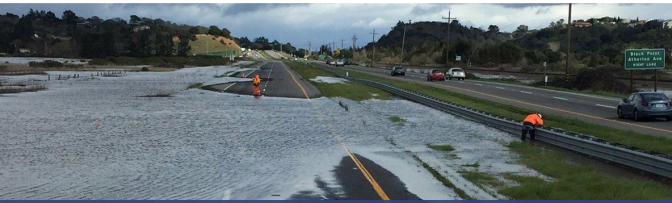


- *Task 1.1:* Create a long-term regional vision rooted in communities, Bay habitats, and the economy
- *Task 5.1:* Provide incentives for robust, coordinated local adaptation plans.
- *Task 8.1:* Incentivize projects that meet regional guidelines
- *Task 9.1:* Measure regional progress using metrics and share results.



## Guiding Principles

- Support socially vulnerable communities
- Put nature first whenever possible
- Solve interconnected problems at the same time
- Practice inclusive, community-led governance and decision making
- Support existing efforts but plan for the long term
- Pick the right strategy for the right time at the right place



Top photo is king tides at Bothin Marsh, courtesy of the California King Tides project, Middle photo is an outreach event at Richmond. Bottom photo is flooding on SR 37, courtesy of Caltrans.



# New State law for sea level rise adaptation plans (SB 272)

- Requires local jurisdictions to develop “**shoreline resiliency plans**”
- BCDC develops **plan guidelines** and reviews and approves plans
- Directs **State funding** for plan creation and projects in approved plans
- Based on Bay Adapt **Guiding Principles**

- ✓ **Requires local plans**
- ✓ **Creates guidelines**
- ✓ **Linked to funding**





# What is the Regional Shoreline Adaptation Plan (RSAP)?

A region-wide plan for the Bay shoreline that guides the creation of coordinated, **locally-planned** sea level rise **adaptation actions** that **work together** to meet **regional goals**.



OCEAN  
PROTECTION  
COUNCIL



Coastal  
Conservancy

Regional Shoreline  
Adaptation Plan  
An implementing project of BAY ADAPT





# What will the Regional Shoreline Adaptation Plan do?

- **Coordinated** adaptation
- Priority resources to **frontline communities**
- Long-term **health of wetlands**
- **Strategic** implementation
- Common **standards and methods**
- Pipeline of **funding**
- Track and **measure progress**



Regional Shoreline  
Adaptation Plan

An implementing project of **BAY ADAPT**



**b. CRITICAL INFRASTRUCTURE & SERVICES**



**c. ECOSYSTEM HEALTH & RESILIENCE**



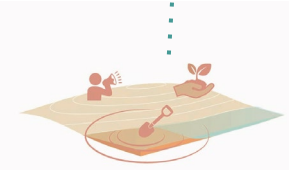
**a. COMMUNITY HEALTH & WELLBEING**



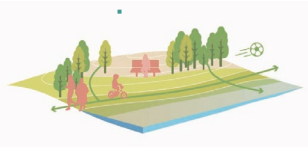
**d. GOVERNANCE, COLLABORATION & FINANCE**



**h. TRANSPORTATION & TRANSIT**



**g. SHORELINE CONTAMINATION**



**f. PUBLIC ACCESS & RECREATION**



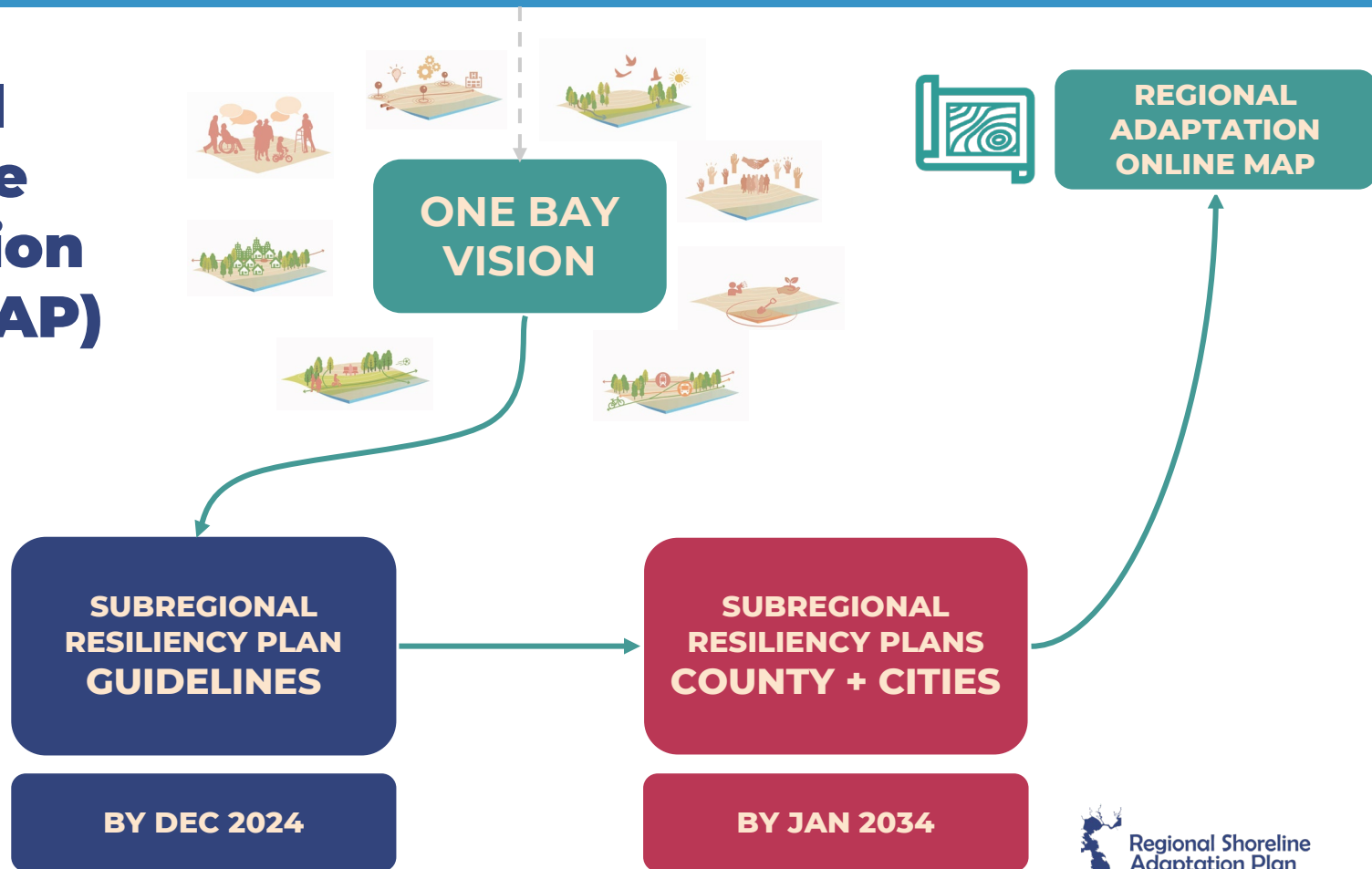
**e. HOUSING, DEVELOPMENT & LAND USE**

**ONE BAY VISION**  
As sea levels rise, the Bay Area's diverse communities come together to transform how we live, work, plan, and adapt along our changing shorelines...

Read the full version online at [www.BayAdapt.org](http://www.BayAdapt.org)

# BAY ADAPT GUIDING PRINCIPLES

## Regional Shoreline Adaptation Plan (RSAP)



# DRAFT Plan Guidelines



Element A: Overview of Planning

Element B: Existing Conditions

Element C: Vulnerability Assessment

Element D: Adaptation Strategies and Pathways

Element E: Project List

Element F: Land Use Plan and Policies

Element G: Implementation and Finance Plan

# DRAFT Minimum Standards

- Minimum and Recommended Participants
- Equitable Engagement and Participation Standards
- Coastal and Flood Hazard Standards
- Time Horizons and Hazard Scenario Standards
- Minimum Categories and Assets
- Vulnerability Assessment Standards
- Adaptation Evaluation Criteria
- Adaptation Strategy and Pathway Standards





# ADVISORY GROUP



# **Equity Strategy in Practice** **through the Regional Shoreline** **Adaptation Plan Guidelines**

**Phoenix Armenta, Senior Manager for Climate Equity and Community  
Engagement**

No matter where you live, **shoreline flooding will impact everyone** in the Bay Area

What's at risk?  
(40-100 years)



**5 million** daily highway vehicle trips

**60,000** daily rail commuters



**13,000** existing housing units

**104,000** existing jobs

**70,000** new, planned housing units

**85,000** new, planned jobs



**28,000** socially vulnerable residents

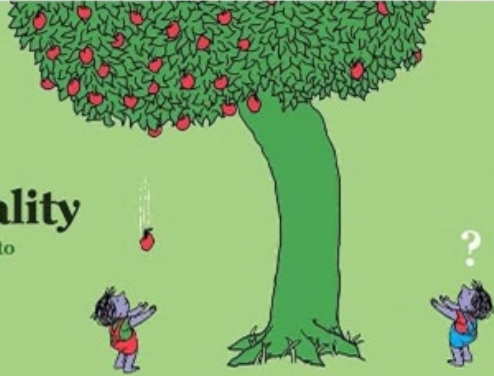


**20,000** acres of depressional wetlands, lagoon and tidal marsh habitat

# Equity and Justice

## Inequality

Unequal access to opportunities



## Equity

Custom tools that identify and address inequality



## Equality?

Evenly distributed tools and assistance



## Justice

Fixing the system to offer equal access to both tools and opportunities



# Our Work Together

Equity Strategy supporting other RSAP deliverables



# Community Outreach

# 2023 FALL OUTREACH

> 500 people shared with us  
their values and visions for the  
future of the shoreline

- 10 events
- Public Workshop
- Expert Advisory Group
- Online survey
- Video



# 2024 Public Workshops

> We will be hosting workshops for the public to weigh in on the RSAP Guidelines this Spring

- 5 workshops
- Led by local CBO's
- Review the Guideline
- Public Tours of the Shoreline



# Shoreline Leadership Academies (In alignment with SB 272)



- Pay **residents from underrepresented communities** to learn about the shoreline issues
- Participants learn from **subject matter experts**
- Six month academies with online and **on the shoreline** learning experiences.
- Graduates of the program will become **advisors** to local jurisdictional planning processes.



# Equity Assessments

# Example: Transportation & Transit

## Vision:

As sea levels rise...

***Safe and reliable transportation connects the region.***

To achieve this:

- Adapt local and regional transportation systems to ensure safe and reliable connectivity by air, land, and water.
- Ensure continuity and equitable service in transit dependent communities.
- Identify and integrate multi-benefit opportunities, such as improving ecological health and expanding public access, alongside major transportation projects, when possible.
- Promote active, low emissions mobility options for environmental and economic benefit.

PROCESS

ASSESSMENT

ADAPTATION ACTION

## Intent:

## Guideline:

Coordinated priorities

Engage with state, regional, and county transportation agencies to identify priorities and actions to increase community's transportation assets and services.

Identify critical infrastructure assets for your community

Determine the high-risk community and way in and out of the community to move significant consequences for public health and safety. Identify transportation assets and services within your community, including those that lack redundancy (i.e. one source of transit to a community), those that are costly to repair, and those with

**Adaptable Transportation Infrastructure**

**Adaptability:** plans are developed and features integrated into the design now that would allow infrastructure owners to adapt the structure to a higher level of protection should it become necessary over time

**Redundant Transportation Infrastructure**

**Redundancy:** plans are developed now and implemented over time that help the infrastructure maintain functionality when it or parts of it fail

**Strategic Network Transportation Investment**

On the basis of vulnerability assessments already in place, underway or to be completed in the future, infrastructure development in high-risk areas should be based on whether the infrastructure owner is willing to pay for the necessary measures to ensure functionality over the effective lifetime of the infrastructure (often considerably longer than the design life), using the above four strategies.

Who will be accountable?

How will working class benefits be considered?

Make accommodations for mitigating unintended consequences

**Expert Panel Discussion:**  
**Advisory Group Members Perspectives**  
**from Community, Environment, and**  
**Infrastructure**

# Panel: RSAP Advisory Group Perspectives from Community, Environment, and Infrastructure



**Anthony Khalil**  
Bayview Hunters  
Point Community  
Advocates



**Emily Corwin**  
Fairfield-Suisun  
Sewer District



**Miyko Harris-Parker**  
San Francisquito  
Creek Joint Powers  
Authority



**Jeremy Lowe**  
San Francisco Estuary  
Institute

**Moderator: Jaclyn Perrin-Martinez**

## **Small Group Discussions:**

**We want to hear from YOU as we  
develop guidelines that support our  
Bay Area needs and values**

- **Get into groups of 3-4**
- Introduce yourself
- Discuss the following questions

**Move around the room  
and get into small groups**

- Get into groups of 3-4
- **Introduce yourself**
- Discuss the following questions

**> Tell your group about what you do and what brought you to this session**

**> Share any experiences with equity, nature, of infrastructure if you have any!**

- Get into groups of 3-4
- Introduce yourself
- **Discuss the following questions**

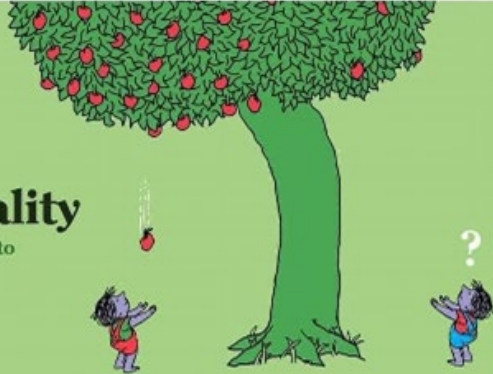
- 1. What will it look like to have equity in local planning?**
- 2. What do you think putting “nature first” in adaptation means?**
- 3. How can infrastructure projects better integrate equity and the environment?**



# Equity and Justice

## Inequality

Unequal access to opportunities



## Equity

Custom tools that identify and address inequality



## Equality?

Evenly distributed tools and assistance



## Justice

Fixing the system to offer equal access to both tools and opportunities



1. What will it look like to have **equity** in local planning?
2. What do you think putting **“nature first”** in adaptation means?
3. How can **infrastructure** projects better integrate equity and the environment?

**menti.com**

**CODE**

**6841 6667**



# ACTIVITY RESPONSES

# Next Steps



## Next Steps for the RSAP

- Published **One Bay Vision** online
- **Local workshops** with five Community-Based Organization partners in May-June
- **Public workshop** in fall on the guidelines development
- **New blogs** published on our website
- Join the [RSAP Mailing List](#) for updates

Visit us at [\*\*www.BayAdapt.org\*\*](http://www.BayAdapt.org)

# Jaclyn Perrin-Martinez

Senior Climate Adaptation Planner  
Bay Conservation and Development Commission  
[Jaclyn.Perrin-Martinez@bcdc.ca.gov](mailto:Jaclyn.Perrin-Martinez@bcdc.ca.gov)



RSAP Video  
**Rising Sea Level and the Bay  
Area: Our Region's Shared  
Challenge and Opportunity**